

*Count on us.*

# Smart Services

Increase your service level, optimize your processes from anyplace, anywhere, anytime



M844 Data Acquisition and Communication Module

Guidense TDR200-SMART  
Continuous Guided Level Radar

Web-portal  
Processmonitor

## Improve your process

With Smart Services we go further than just remote monitoring. Apart from the measured value, it is now possible to gain full access to the sensor data from anyplace, anywhere, anytime for improving and optimizing your complete process. Even the echo curve which is the sensors core information can be visualized. Potential failure due to process conditions like foaming, swirling and level changes can be explained and corrected, which results in a reliable and stabilized process.

## Data communication

- ✔ Smart bidirectional digital communication between the Guidense TDR200-SMART and the M844.
- ✔ GPRS data communication through TCP, FTP and/or email.
- ✔ Full control through the web-portal or the ProcessView software.
- ✔ Process alarms and system alerts by SMS.

## Applications

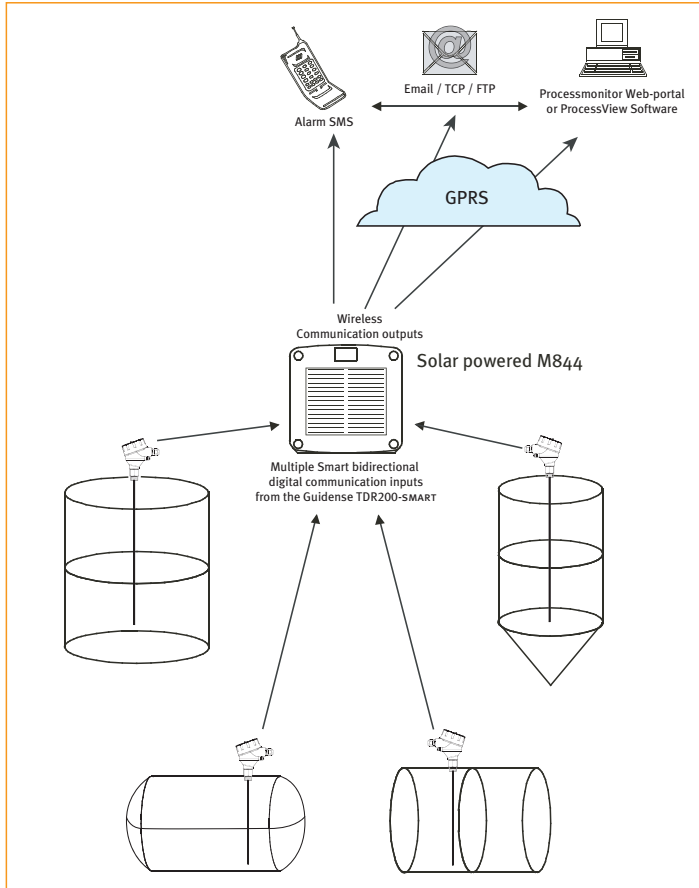
- ✔ These solar powered, combined field devices are extremely suitable for off-grid and hard to reach locations.
- ✔ Suitable in almost every liquid and solids - independent of changing process conditions, such as density, conductivity, temperature, pressure, vapour, turbulence, low dielectric constant or low reflectivity.

## Features

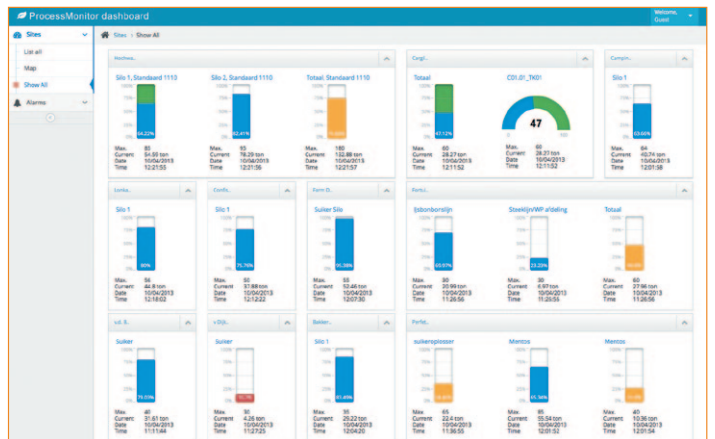
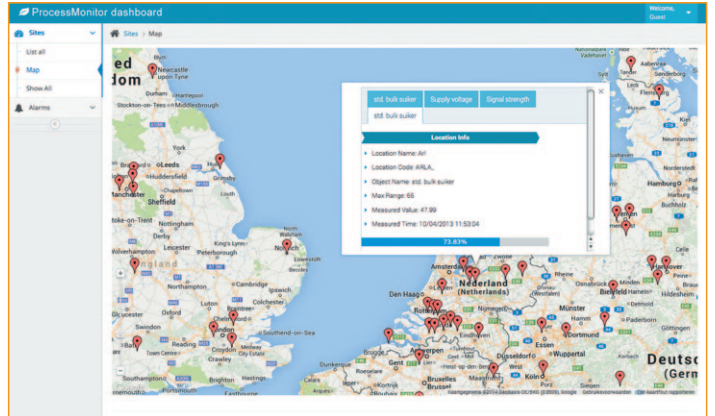
- ✔ Entirely autonomous monitoring and datalogging using GSM/GPRS communications and solar panel, battery or AC/DC power options.
- ✔ Full control to easily read, modify, store and analyse all process parameters from anyplace, anywhere, anytime.
- ✔ Easy and time saving remote configuration through Smart bidirectional digital communication.
- ✔ Full compliance with the ProcessMonitor web-portal or ProcessView software for data history, graphic visualization and/or alarming.
- ✔ Data logging by 2GB micro-SD card for > 10 million data entries.
- ✔ Resistant to harsh environments as Guidense TDR200-SMART is IP68/NEMA6P and the M844 is IP67 / NEMA4X.
- ✔ 110 - 230V AC mains and reverse polarity protected 8 - 30V DC power supply, battery or solar powered.
- ✔ 3 types: Single rod probe, Wire rope probe and Coaxial probe.
- ✔ Very easy to install due to plug-and-play connectors.
- ✔ The Guidense has almost no installation restrictions: small tanks, tall and narrow nozzles or difficult tank geometries or close to interfering structures.

Count on us.

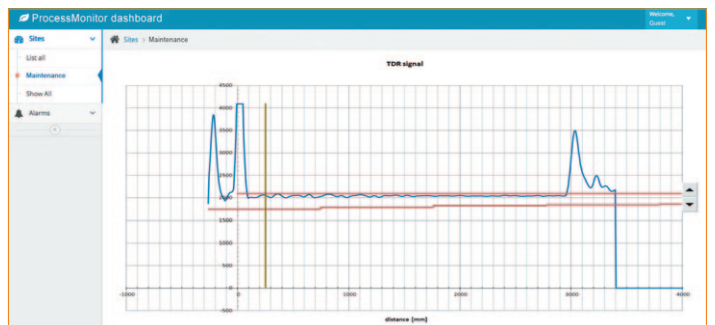
### Smart Services application overview



### ProcessMonitor web-portal screenshots



### Smart Services application example



Parameter	Setting	Unit	Default	Minimum	Maximum
SW Version	1.01				
Current level	2899	mm			
Status	no gas flow sensor				
Gain	0.1				
Device mode	Inter phase		Single phase		
Slope coastal probe	2400	mm	2400	1000	16000
Offset coastal probe	-3951	0.1 mm	-3900	-10000	16000
Slope single probe	2410	mm	2400	1000	16000
Offset single probe	-3700	0.1 mm	-3595	-10000	16000
Probe length	2900	mm	3000	0	20000
Upper level dead band	400	mm	300	10	20000
Level amplitude threshold	400	ADC	500	0	20000
Probe type	Mono		Mono		
Empty signal usage: level	OFF		Top		
Amplitude mode: level	Dynamic amplitude		Below lower amplitude limit		
Interf. scan length	6000	mm	500	0	20000
Upper interf. dead band	500	mm	800	10	20000
Interf. amplitude threshold	800	ADC	141	10	16000
Dialectic constant	141	sq(Er) * 100	100	100	300
Amplitude mode: interf	Below lower amp. limit		Below lower amplitude limit		